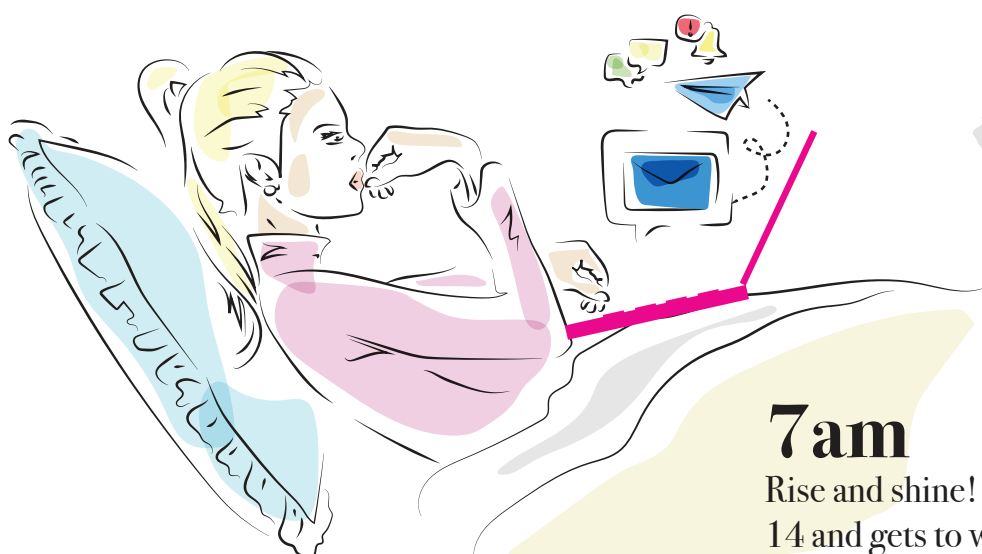




# Day in the life of a fashion designer *Anna*



**7am**

Rise and shine! Anna reaches for her MSI Prestige 14 and gets to work. The 5-degree hinge design gives her the best typing angle to work anywhere ...even in bed!

**9am**

Time to head into the studio! The ultra-light weight, ultra slim form factor of the laptop makes it easy for Anna to carry it wherever she goes. The rose-pink color fits seamlessly into her elegant style.



**10am**

Anna is sketching designs for her upcoming collection. The GeForce GPUs power incredible performance on design apps like Adobe Illustrator via the Creator Center, allowing her to create with ease!



**12pm**

The models arrive for their photoshoot. The photographer gets to work, and the photos go straight from the camera onto Anna's laptop. The Prestige series features the latest 10<sup>th</sup> Gen. Intel®Core™ i7 processor so Anna is able to blitz through demanding tasks!



**3pm**

Anna gets a sneak peak of the latest textile designs from Morocco. The exclusive True Pixel display delivers images with 4K resolution, AdobeRGB 100% color gamut, factory-calibrated Delta-E < 2 out of the box accuracy and True Color Technology so Anna gets a spectacular visual experience of the fabrics for her new collection.

**5pm**

It's almost time to wrap up the working day. The device has lasted all day without needing a charge. With up to 10 hours of productivity time, the laptop is perfect to keep Anna's creative spirit through the day!



**10 hrs**



Visit <https://www.msi.com/Content-Creation/Prestige-14-A10X-Pink>

to find out more.